

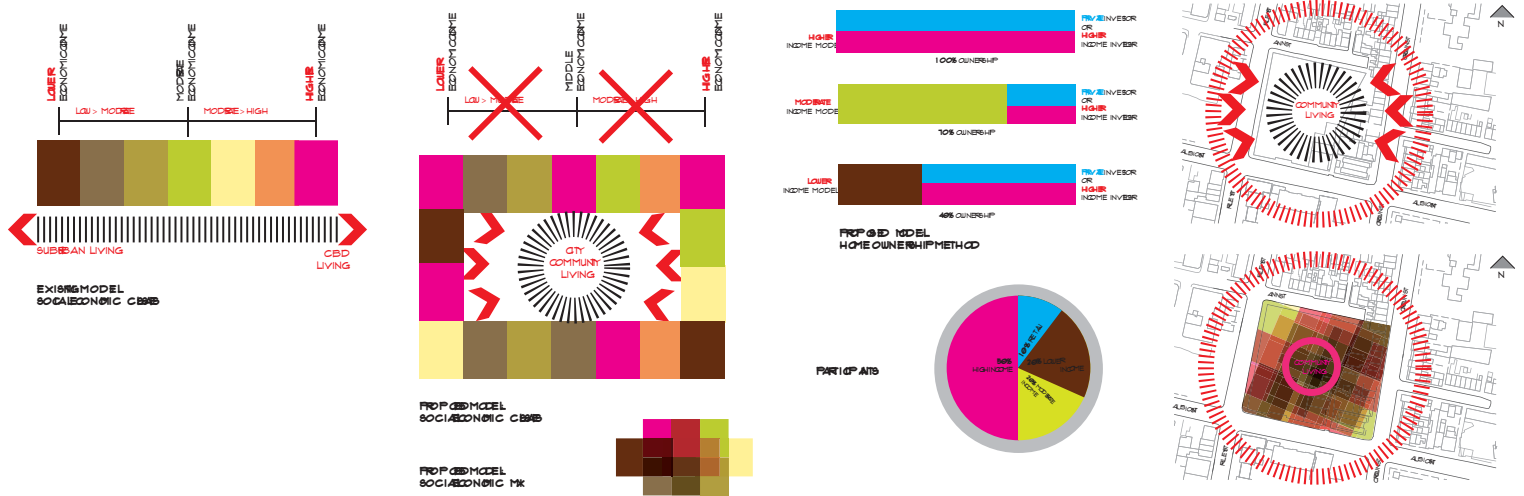


# “whats mine is ours”

Michael Prakash  
10442844

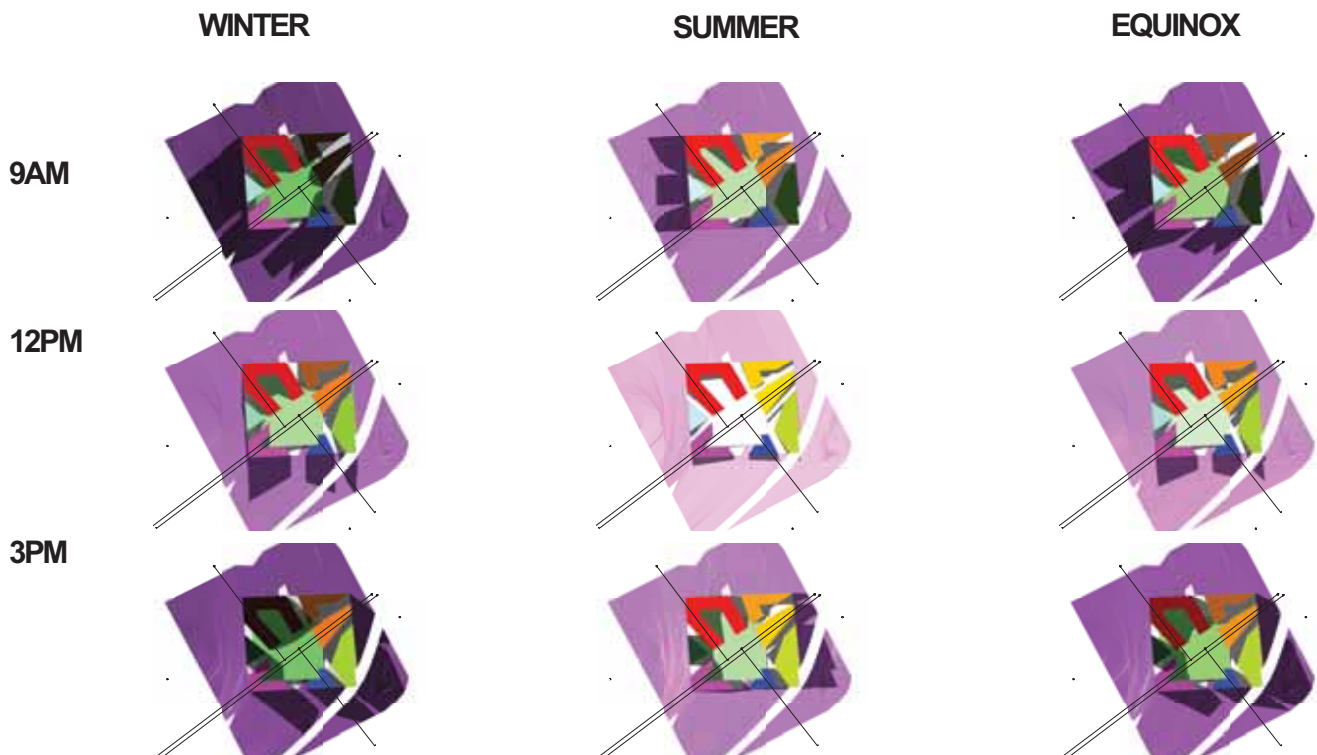
The proposal aims to influence the western philosophy towards living, from the self centred view of 'mine', to 'ours'. This can be achieved by designing a housing master plan which promotes a sense of social contact and community, whilst also providing private individual space. Programs which generate a communal economy such as green house farms, outdoor areas and shared amenities such as child care centres and aquatic facilities have been integrated to the site master plan in order to create a shared community.

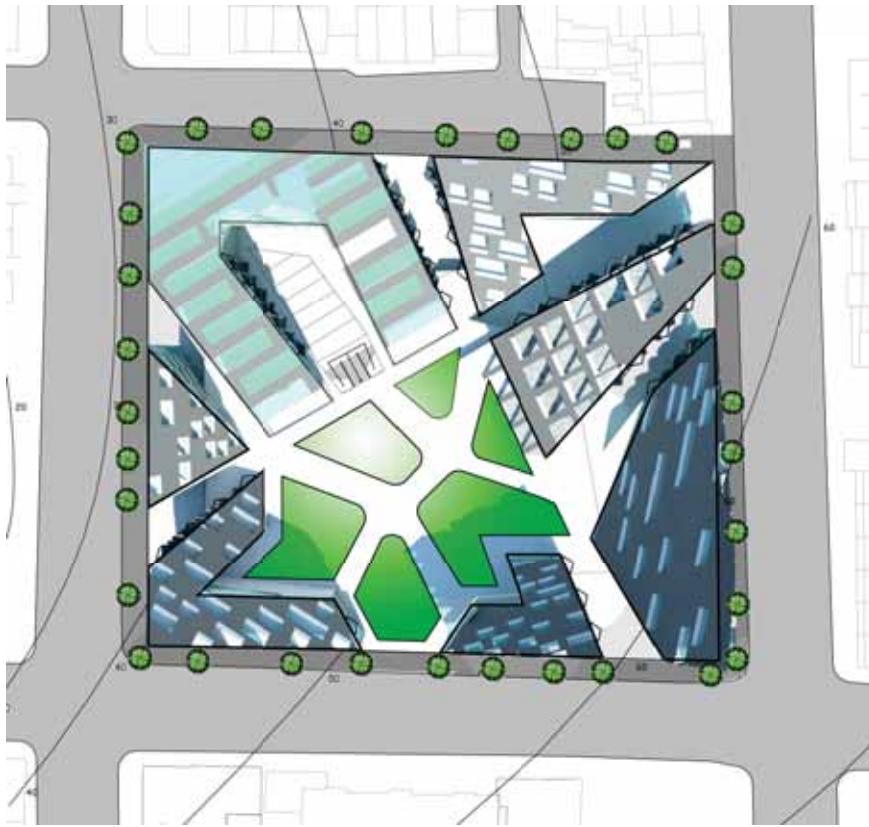
## “Opportunity for communal living”



## “Responding to sustainable living”

Development to allow maximum solar penetration all year around

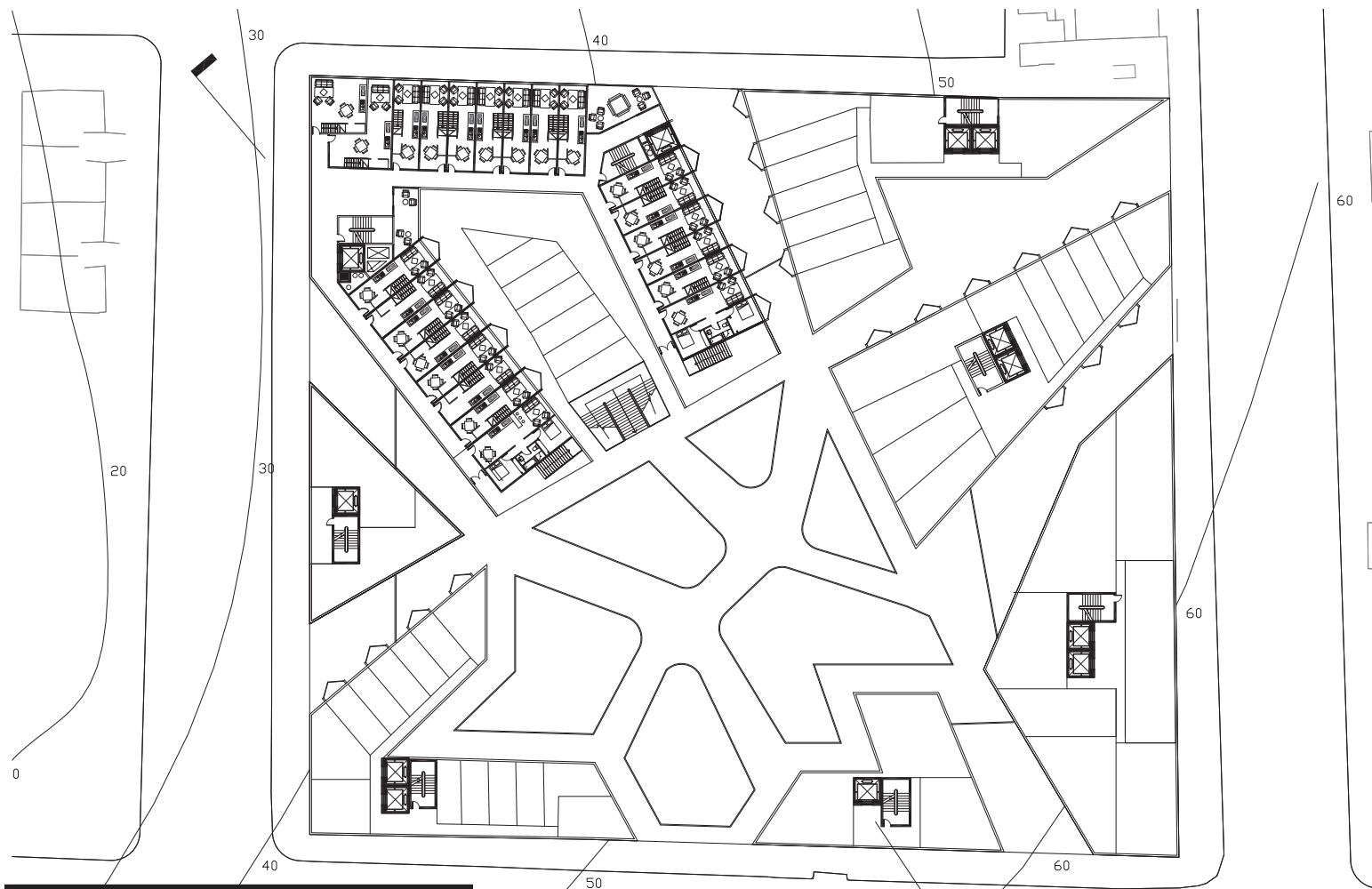




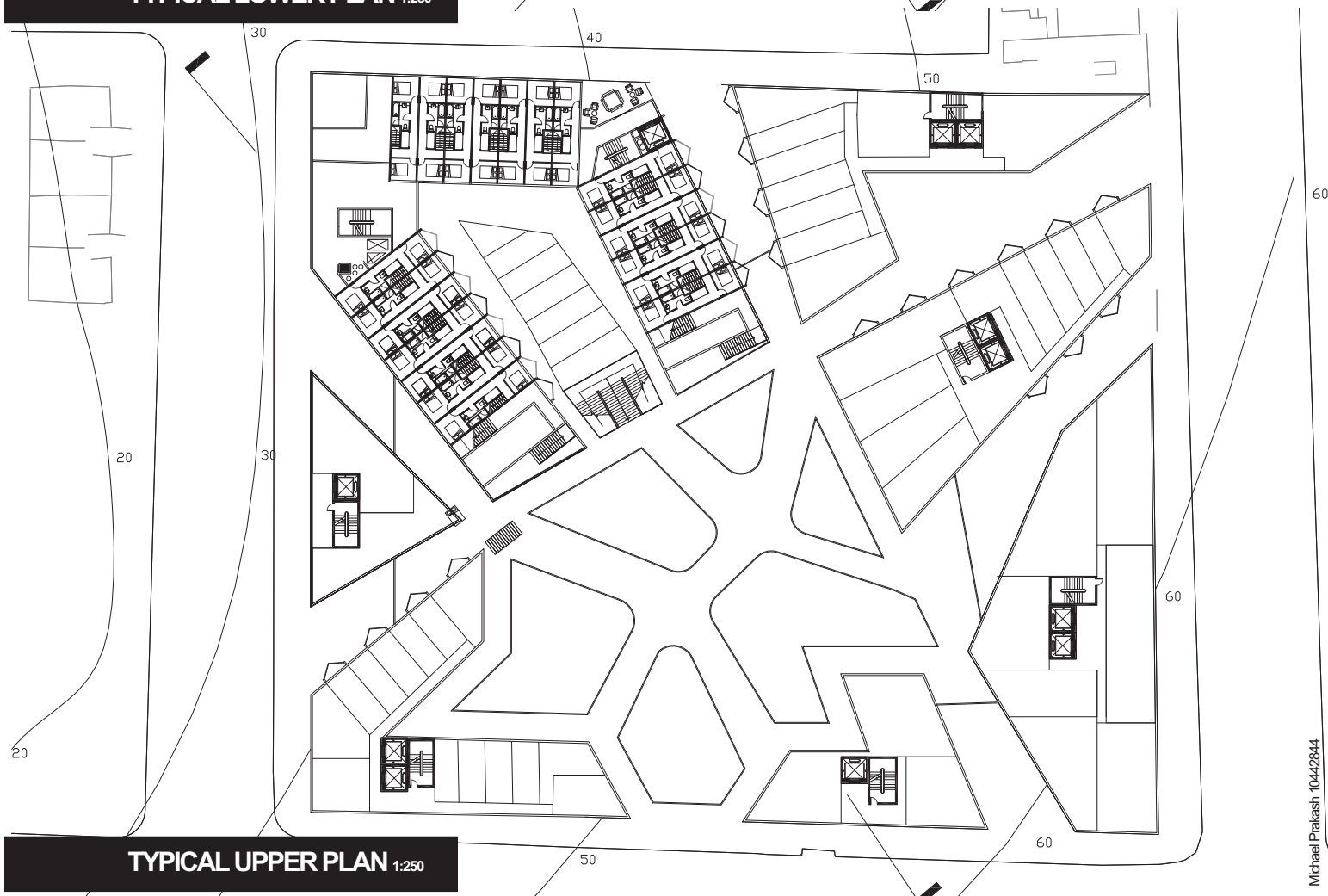
**MASTER PLAN 1:1000**



**GROUND FLOOR PLAN 1:250**

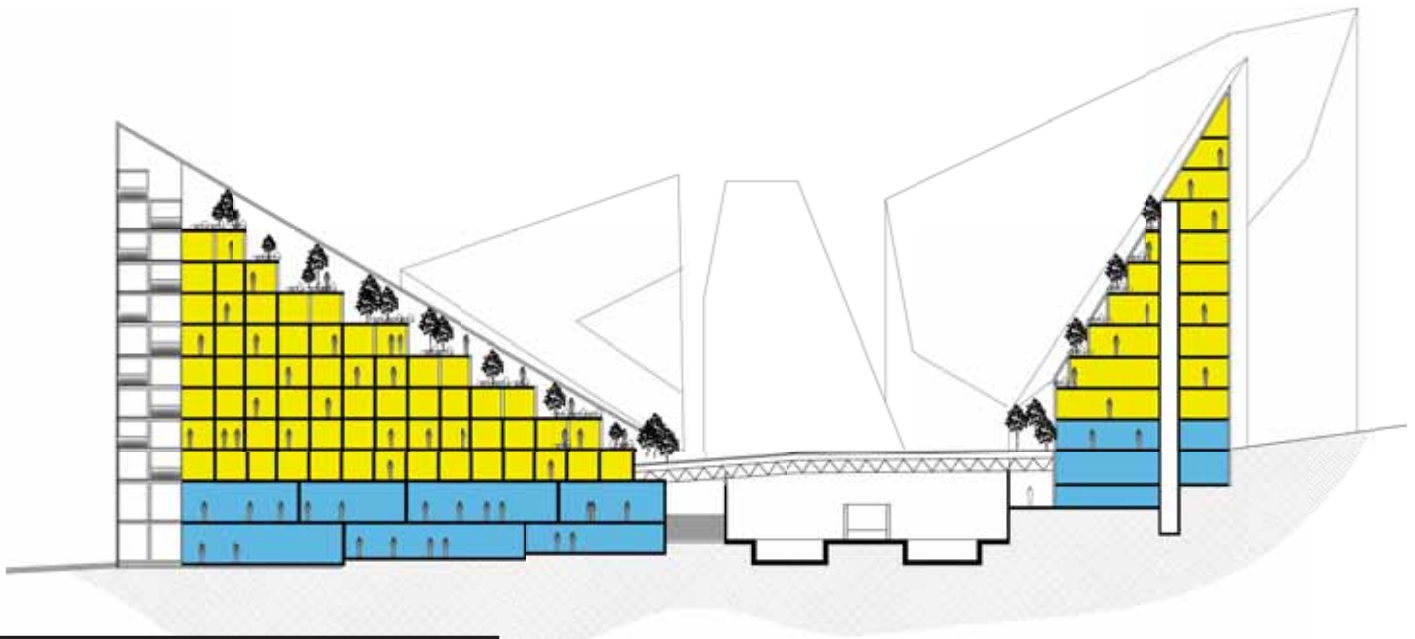


**TYPICAL LOWER PLAN** 1:250



**TYPICAL UPPER PLAN** 1:250

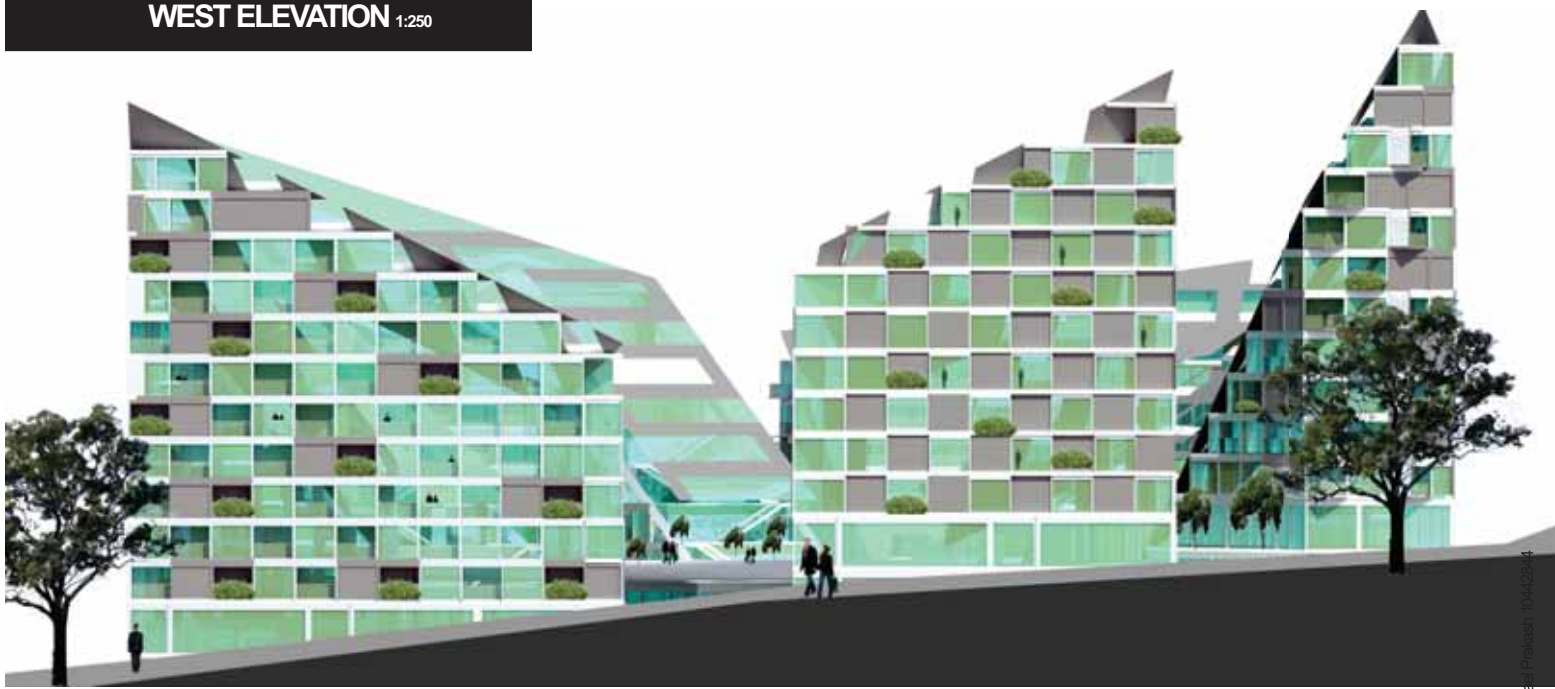




SECTION AA 1:250



WEST ELEVATION 1:250



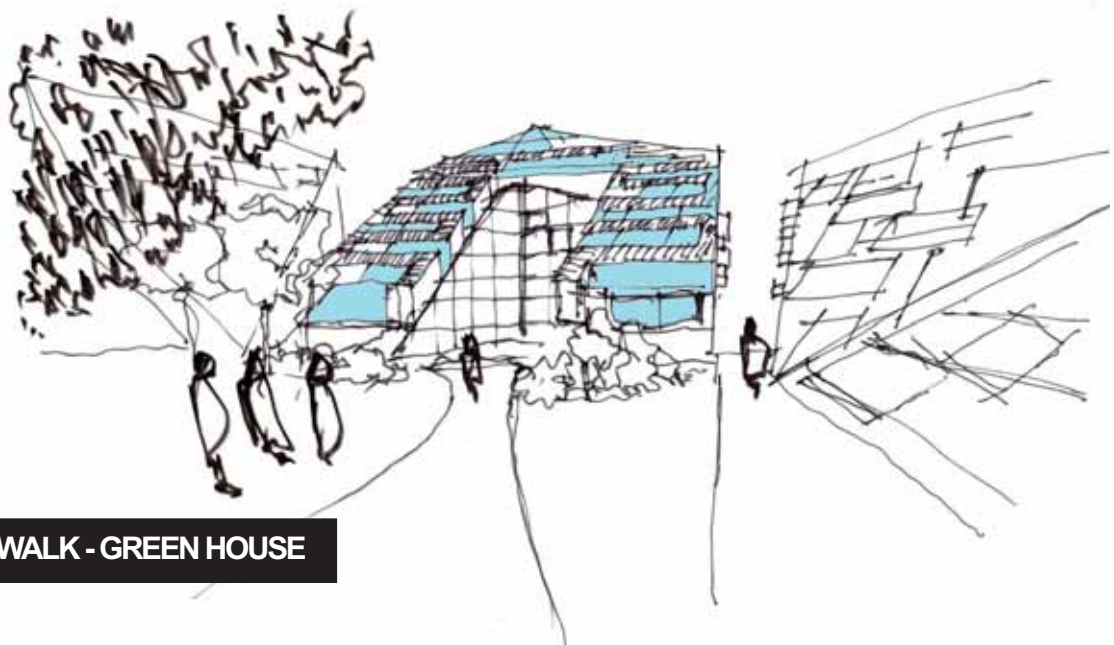
SOUTH ELEVATION 1:250



**EAST ELEVATION** 1:250



**NORTH ELEVATION** 1:250



**ROOF WALK - GREEN HOUSE**



